



Jacksonville  
Urban League

# Community Empowerment Center

"A COMMUNITY AND WORKFORCE DEVELOPMENT PROJECT"

*Investing in People. Building Community.*





## The Challenges We Face:

Jacksonville's underserved neighborhoods continue to **face** significant **challenges**, including high unemployment, limited **access to digital infrastructure**, increasing mental health needs, and insufficient **support for small businesses**. These issues are particularly acute in the area surrounding the Community Empowerment Center at 1265 Kings Road, where health disparities are notably concentrated. Addressing these systemic barriers requires a **bold, community-driven response**.

## Our Opportunities:

A community-first hub designed to turn today's challenges into tomorrow's opportunities.

# Opportunities:

A community-first hub designed to turn today's challenges into tomorrow's opportunities.



## Workforce Empowerment

Provides job readiness training, digital literacy, and career coaching to help residents secure employment and build long term career pathways.



## Business Development

Supports aspiring entrepreneurs with cohort-based training, one-on-one coaching, legal and accounting clinics, and access to funding resources.



## Tech & Innovation Labs:

Offers access to design software, internet tools, and youth-focused innovation spaces featuring AR/VR, 3D Printing, and business planning platforms.



## Civic & Cultural Engagement

Activates public space through events, forums, and arts programming, fostering community, connection, and civic participation.





The **Community Empowerment Center** is envisioned as a transformative civic landmark—one that brings meaningful investment, equity, and renewed pride to the historic intersection of Kings Road and Myrtle Avenue. This area, long recognized as the cultural heart of Jacksonville’s Urban Core, has endured decades of underinvestment.

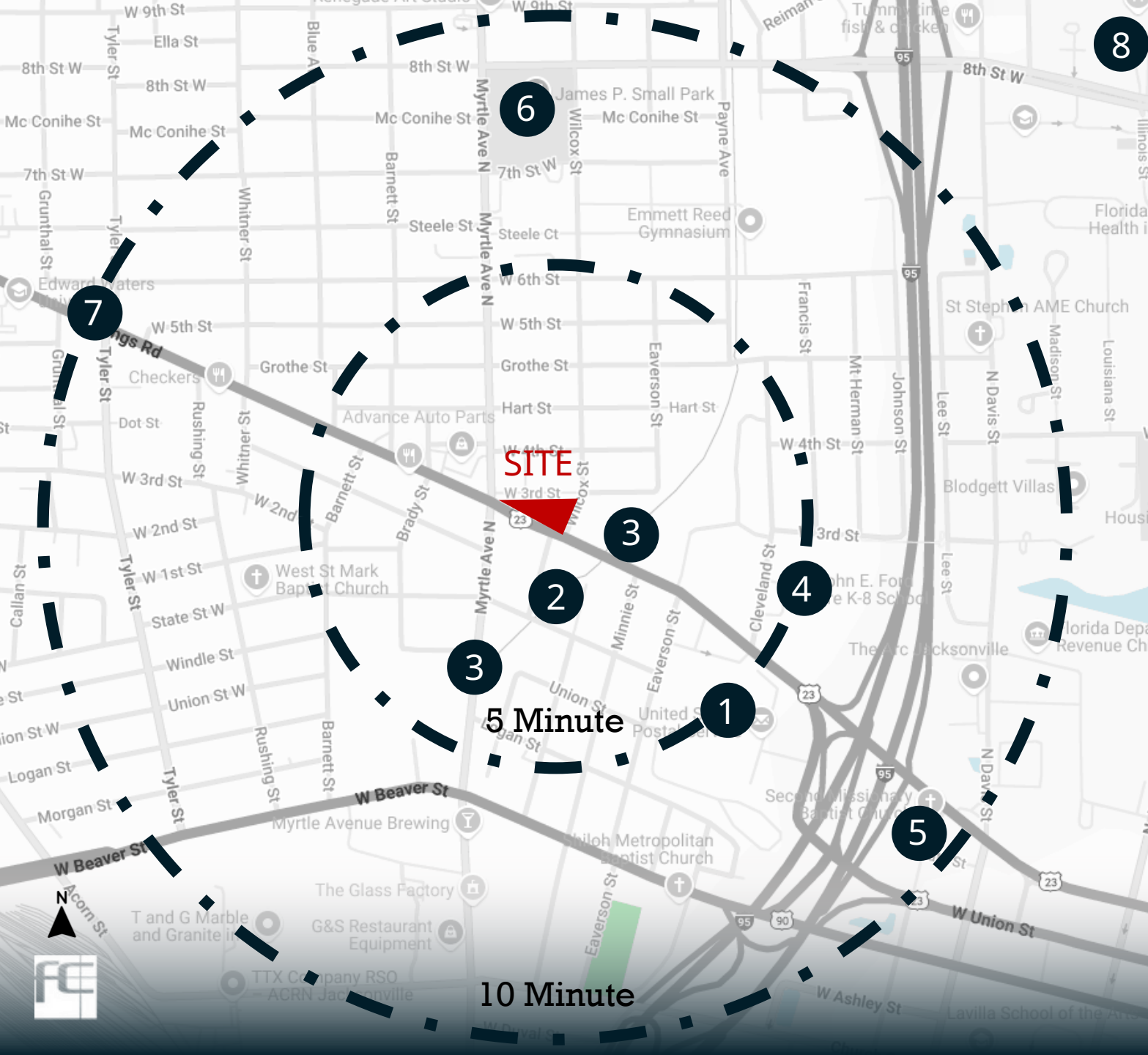
The Center seeks to reverse that trend through intentional, community-centered development. More than just a service facility, the Center is a symbol of healing, resilience, and unity. Conceived as a **“jewel box” for the neighborhood**, it will feature a visually striking, architecturally significant design that reflects the dignity and strength of the community it serves. Its mission-driven purpose goes beyond the physical structure: it is dedicated to uplifting the lives of local veterans and nearby residents through accessible resources, holistic wellness, and civic engagement.

At its core, the Center is a **shared community space**—flexible and inclusive. It will host public meetings, educational workshops, family-focused events, and small business incubation. Its location near Durkeeville, LaVilla, and the New Town neighborhoods offers built-in connectivity to wellness amenities and green space, encouraging healthier lifestyles and active neighborhood engagement.

Ultimately, the Community Empowerment Center embodies a vision for a more equitable and **empowered future**—where communities are uplifted, opportunity is shared, and resilience is built from within. It is a long-term investment in people, place, and purpose—and a bold step forward for Jacksonville.







## Vicinity

### 5-Minute Walk

1. Rutledge Pearson Post Office
2. Standard Feed and Seed
3. Emerald Trail Access Points
4. John E Ford Montessori School

### 10-Minute Walk

5. Ritz Theatre and Museum
6. James P. Small Park
7. Edward Waters University (EWU)
8. UF Health Jacksonville (15- Minute Walk)

# Neighborhood Catalyst

Stimulates reinvestment in historically disinvested zone



Reclaims cultural identity of Kings Road corridor



Attracts public and private redevelopment interest

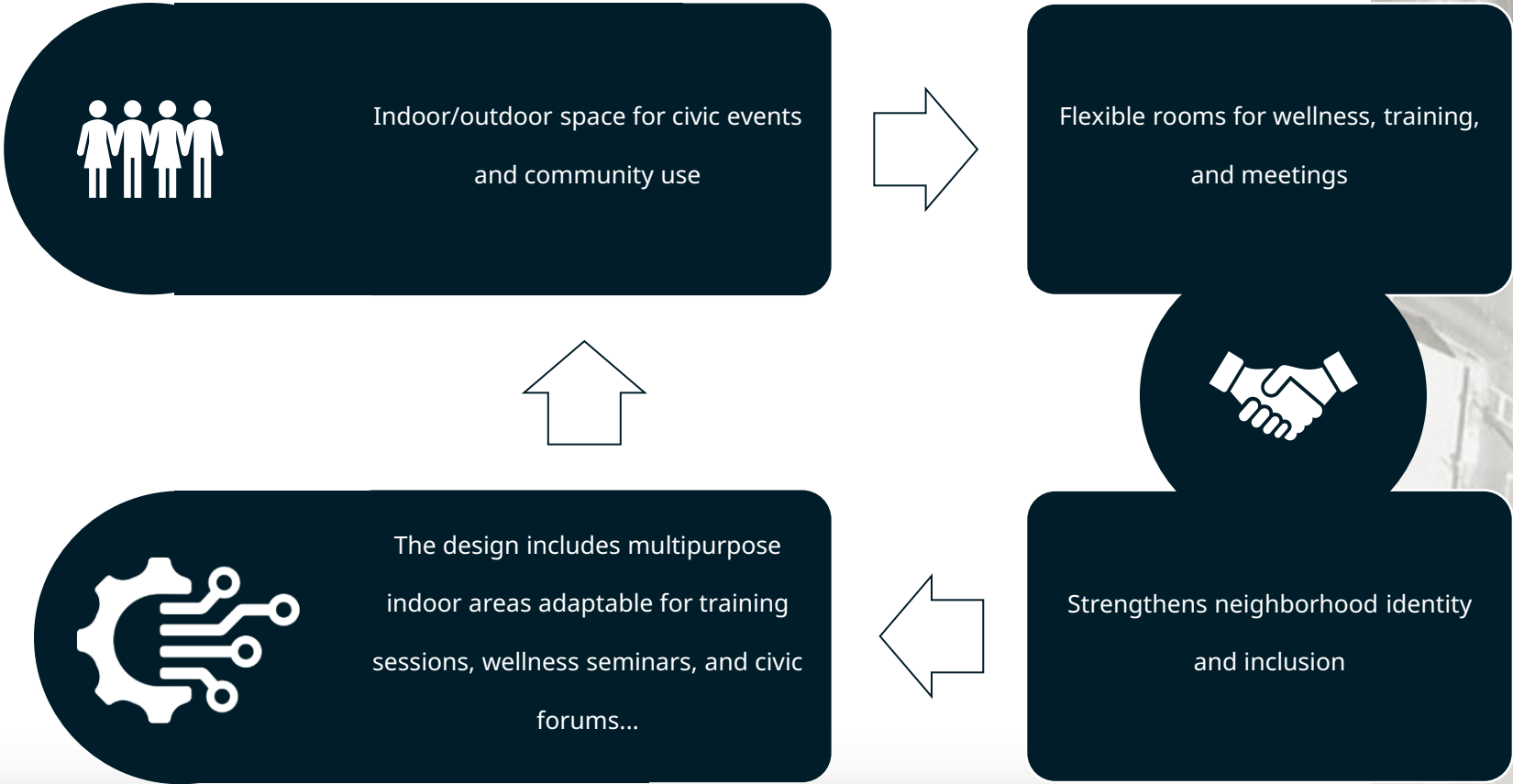


Facilitates re-development, business incubation, youth services, and strategic partnerships





# Community and Workforce Centered Design



# Programming

SITE

Address: 1265 Kings Rd, Jacksonville, FL 32204  
County: Duval  
Zoning: CCG-2 Commercial Community/General-2  
Lot Size: Approximately 0.45 acres



COMMUNITY



4,800 SF

ACCESS

Freight Elevator  
Interior Stair  
Exterior Stair  
Circulation (Corridors)

1,000 SF

SUPPORT

Admin  
Café Storage  
Bathrooms  
Mech. Room  
IT / Elec  
Furniture Storage

1,200 SF

**Multipurpose Area:**  
Entrepreneurship Training Space , Legal  
Accounting Clinic  
Business Growth Lab,  
Cooperative and Social Enterprise Support  
Workforce Translator

**Conference Rooms**  
Entrepreneurship Training Space  
1:1 Coaching Office

**Virtual Reality Lab:**  
Tech Lab and Maker Space  
Workforce Translator  
Digital Access and Tools

**Gallery Space:**  
A dynamic venue for local art, neighborhood  
history, and youth programs—fostering  
creativity, community pride, and  
engagement.

**Café:**  
A community-run café with a warm-up  
kitchen to support local catering, events, and  
daily gatherings—promoting economic  
opportunity and connection.



7,000 SF



Community Empowerment Center

## Site Context

Mt Olive Primitive  
Baptist Church

WEST 3RD ST

SITE

KINGS RD





## Community Empowerment Center

# Master Plan Concept

### Civil Considerations:

- Site planning process with authorities having jurisdiction
  - Use of Adjacent Property Parking Space Approval.
- Maintaining current stormwater status
  - Grandfathered impervious ratio with current paved areas
  - Net -reduced stormwater management need with integrated landscaped areas
- Required parking: **42 Parking Spaces Required**
  - Shared Parking Spaces: 28
    - Existing ADA Parking Spaces: 2
  - New Parking Spaces: 16
  - ADA Parking Spaces: 2





# Programming

## COMMUNITY

- TOTAL HEIGHT: 32' - 0"
- TOTAL LEVELS: 2
- CONSTRUCTION TYPE: IIB
- GALLERY SPACE
- MULTIPURPOSE AREAS
- CONFERENCE ROOMS

## SUPPORT

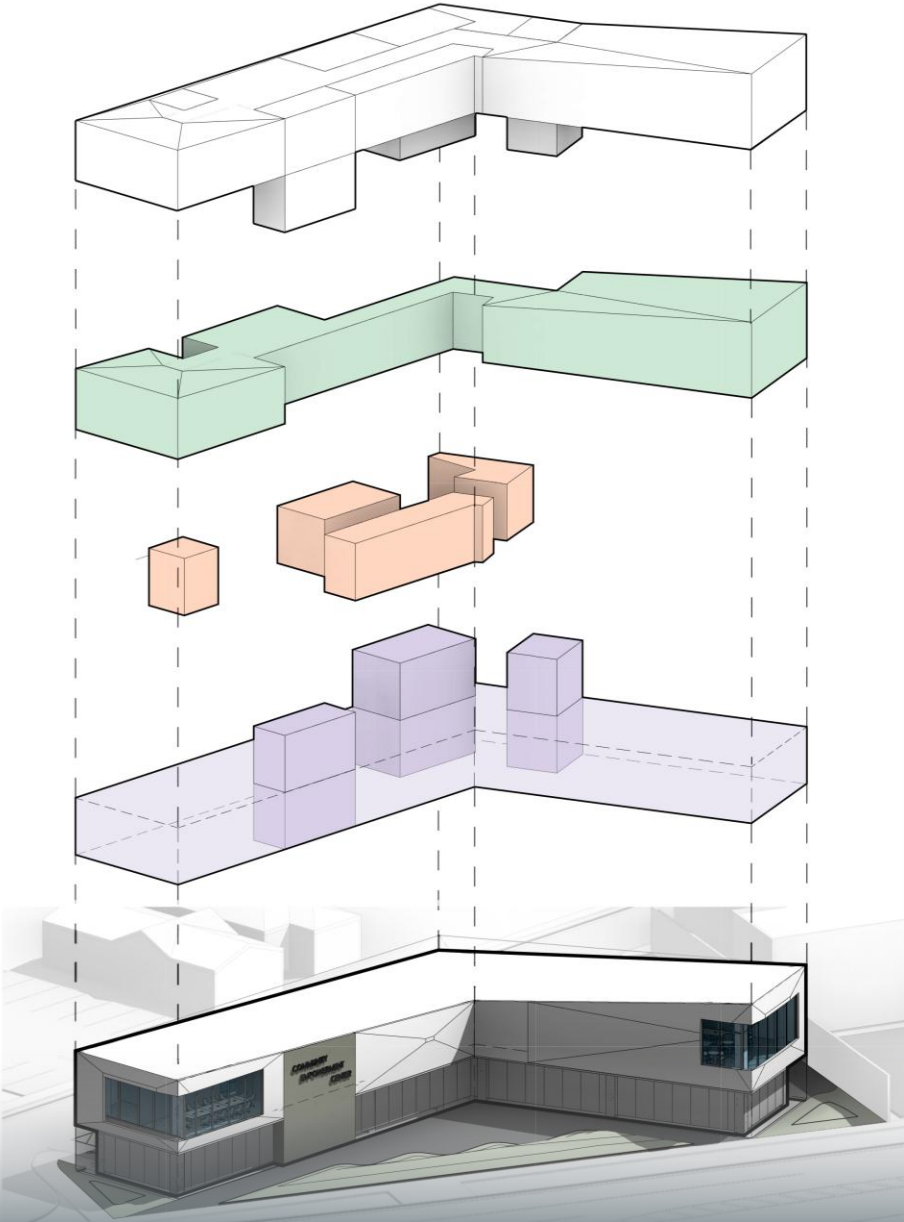
- ADMIN OFFICE
- FURNITURE STORAGE
- CAFÉ STORAGE
- MECHANICAL ROOM
- ELECTRICAL / IT ROOM
- BATHROOMS

## ACCESS

- FIRST LEVEL TO ENHANCE CIRCULATION FOR OUTDOOR EVENTS
- FREIGHT ELEVATOR
- EXTERIOR STAIR
- INTERIOR STAIR

## SITE

- FENCING AND GATES THRU THE FIRST LEVEL TO ALLOW FLEXIBILITY IN CIRCULATION AND SECURITY
- INTEGRATED LANDSCAPE INTO CIRCULATION



# Ground Floor Plan

## ACCESS

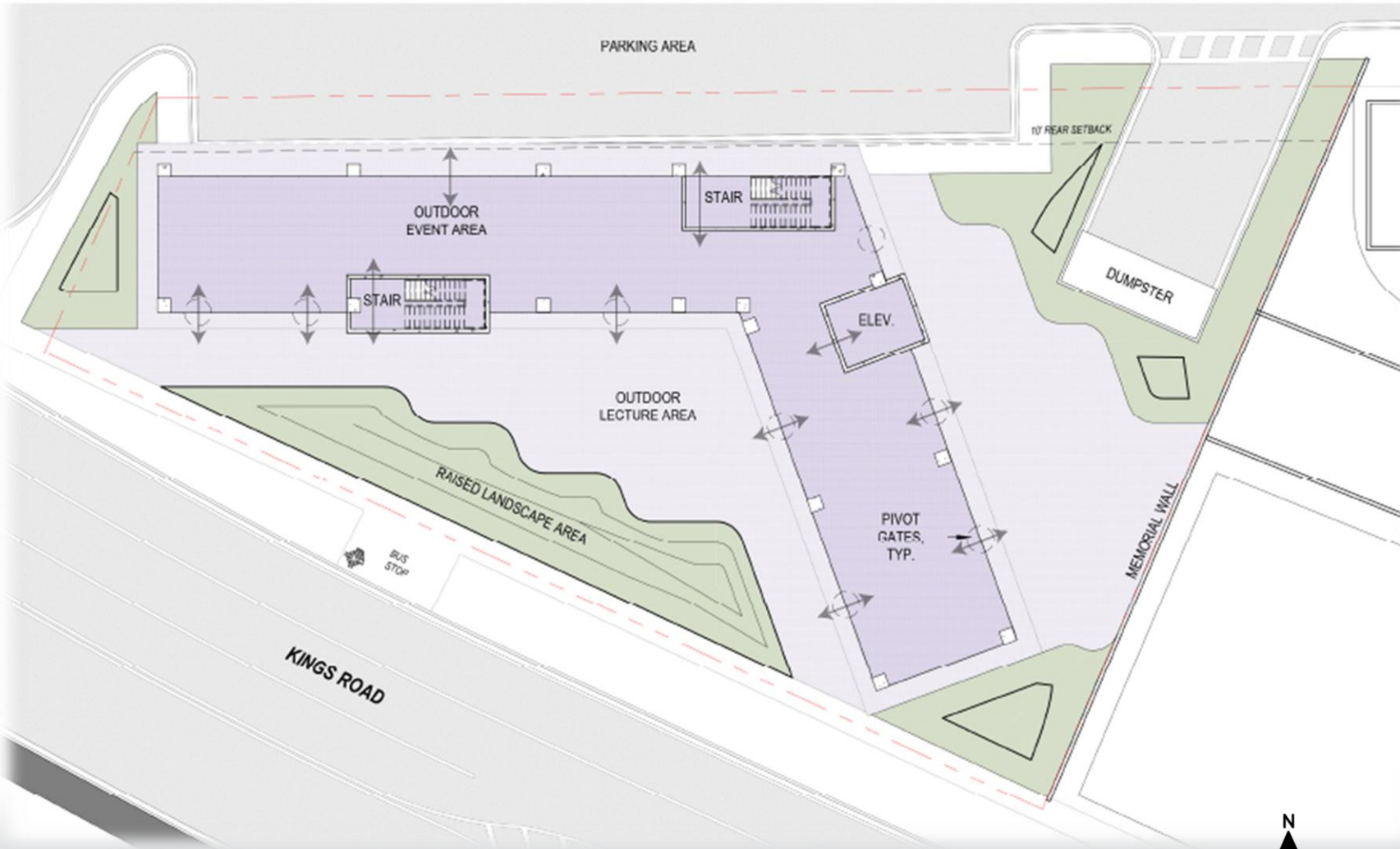
- **OUTDOOR EVENT AREA**  
4,500 SQ. FT

CREATING A COVERED OPEN SPACE TO ACCOMMODATE OUTDOOR EVENTS / LARGE GATHERINGS WHILST STILL MAINTAINING SECURITY AND INTERACTIVITY WITH THE SITE

- **OUTDOOR LECTURE AREA**  
AN OUTDOOR PAVED AREA THAT CAN SUPPORT LECTURES AND GROUP ACTIVITIES

- **MEMORIAL WALL**  
A COURTYARD MEMORIAL TO HONOR VETERANS WITHIN THE JACKSONVILLE AREA AND BEYOND

- **JTAFLA BUS STOP**





# Upper Floor Plan

## COMMUNITY

### COMMUNITY SPACES

4,800 SF

- VIRTUAL REALITY LAB - 230 SF
- CONFERENCE ROOMS - 650 SF
- GALLERY SPACE - 1200 SF
- CAFÉ - 180 SF
- MULTIPURPOSE AREA - 2540 SF

## SUPPORT

### SUPPORT SPACES

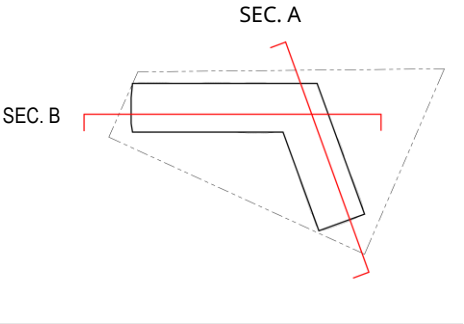
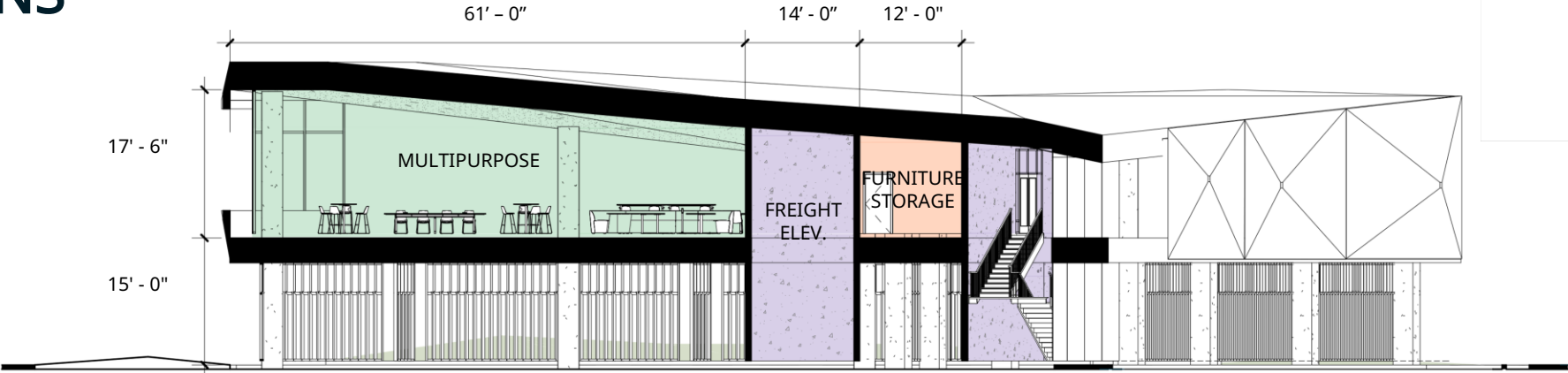
1,200 SF

- ADMIN - 160 SF
- CAFÉ STORAGE - 140 SF
- BATHROOMS - 302 SF
- MECH. ROOM - 245 SF
- IT / ELEC - 84 SF
- FURNITURE STORAGE - 269 SF

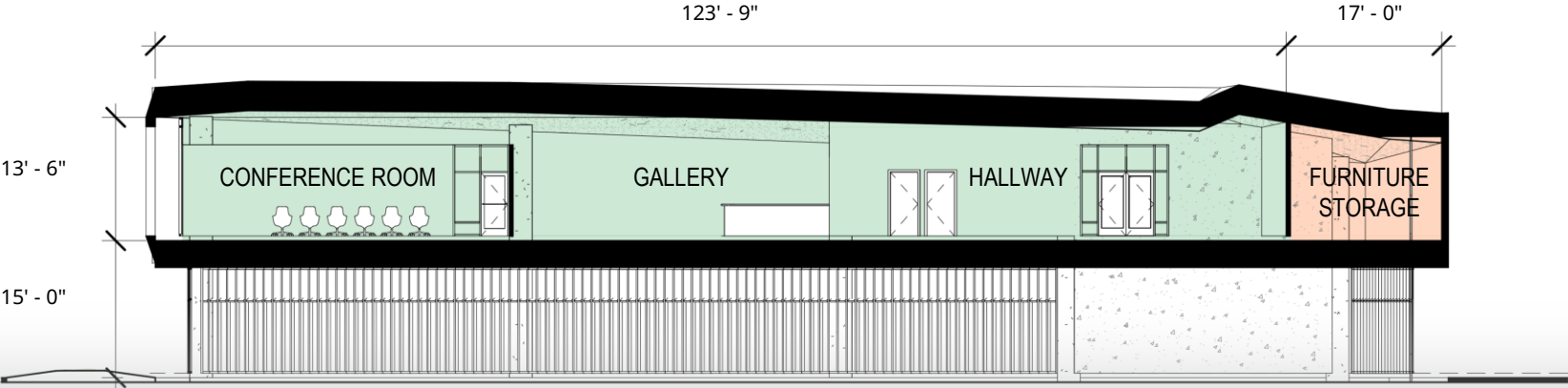


Community Empowerment Center

SECTIONS



SECTION A



SECTION B



LEGEND: CIRCULATION SUPPORT COMMUNITY





Community Empowerment Center

## Street View





Community Empowerment Center

# Aerial View

**P** Shared Parking  
with Mt. Olive  
Primitive Baptist  
Church

WEST 3RD ST

KINGS RD

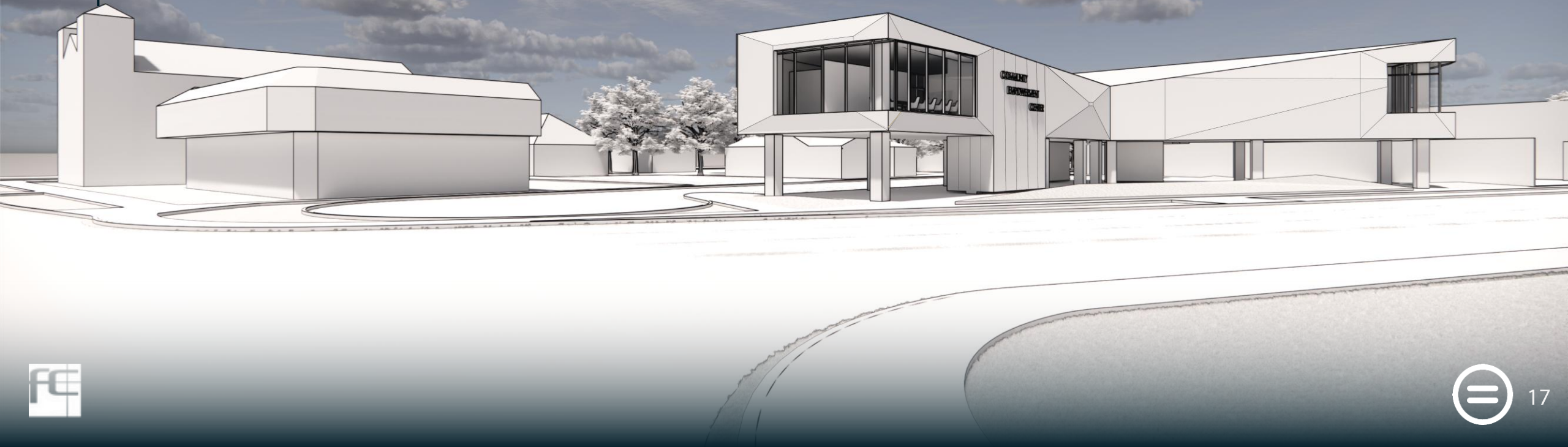
 Event Lawn Area



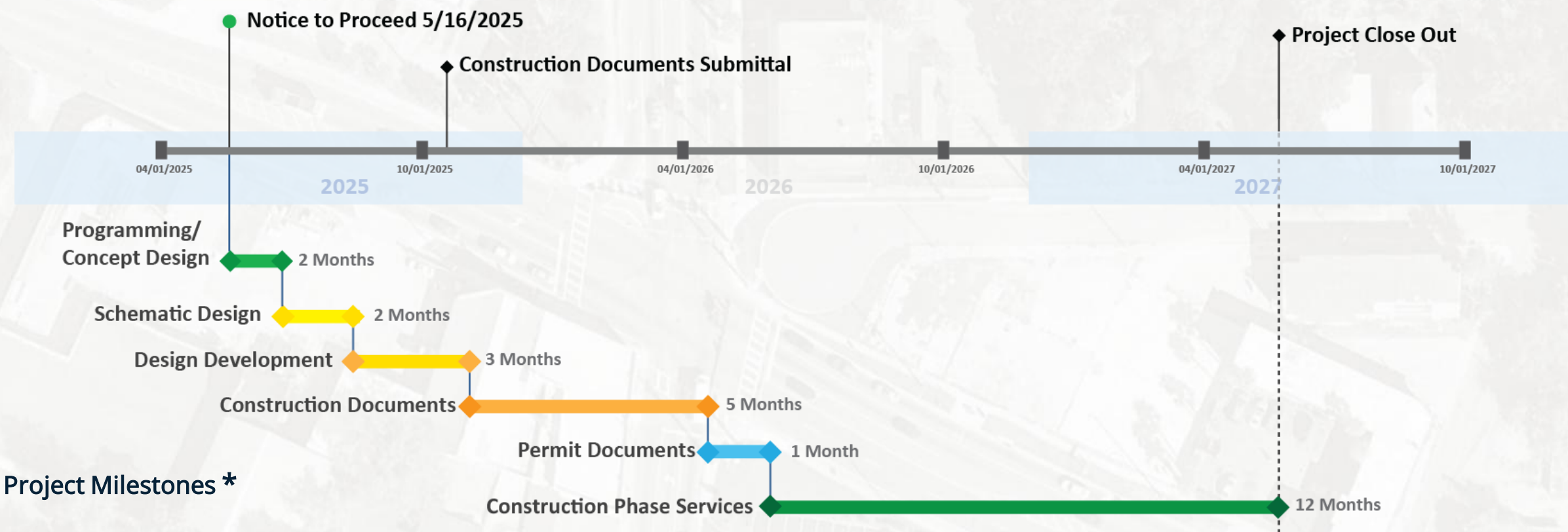


## Mt. Olive Primitive Baptist Church

Mt. Olive Primitive Baptist Church and the adjacent building, currently serving as an Educational Hub supporting youth programs and community initiatives, provide a strong foundation for expanded neighborhood engagement. Integrating these existing assets into the vision for the Community Empowerment Center would enhance its role as a central anchor, strengthening its impact and presence within the area. The Center would activate surrounding public spaces through events, community forums, and arts programming—fostering connection, civic participation, and a vibrant cultural identity.



# Schedule



## Project Milestones \*

- Schematic Design – 2 months
- Design Development – 3 months
- 90% Construction Documents – 5 months
- Permit Documents – 1 month

\* includes considerations for holidays and ‘pens-down’ owner review periods. Options for expedited project delivery are available if required.



\$

# PROJECT BUDGET

## Jacksonville Urban League Community Empowerment Center Funding Source Summary

Item	Amount
Square feet	7,000
Construction cost all	\$4,499,645
FFE and Technology	\$620,000
Total Cost	\$5,119,645
Project Funding Sources	
Federal (Committed)	\$2,000,000
City of Jacksonville Request	\$2,000,000
Private/Corporate Donors	\$1,119,645
Contingency	
Jacksonville Urban League (Contingency)	\$500,000



Jacksonville  
Urban League

# QUESTIONS? THANK YOU!